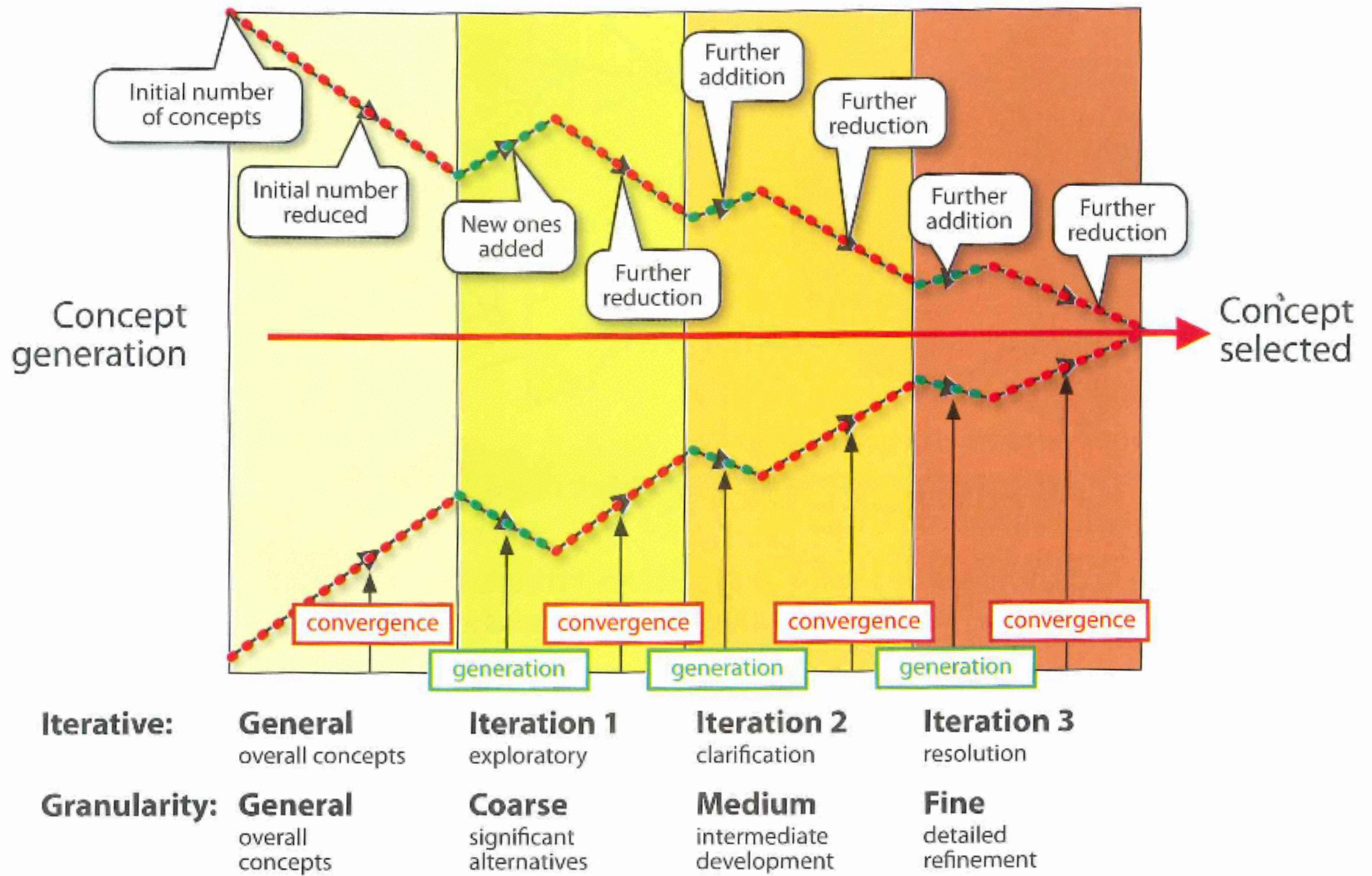


Prototype





**Extreme long shot
(wide shot)**

A view showing details of the setting, location, etc.



Long shot

Showing the full height of a person.



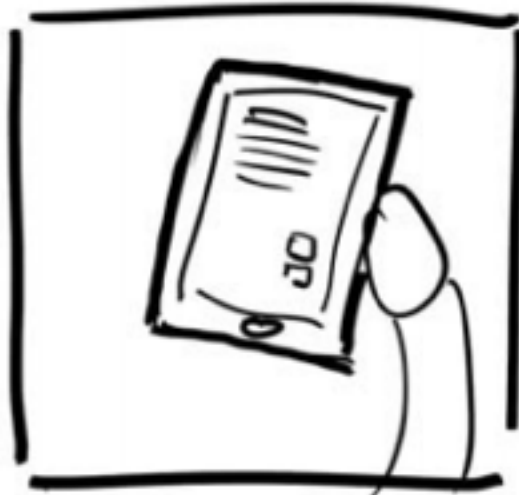
Medium shot

Shows a person's head and shoulders.



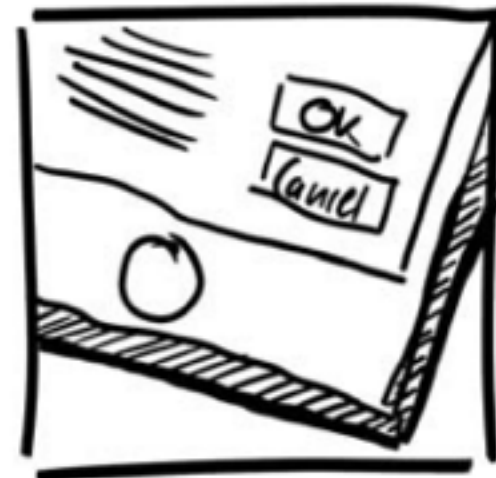
Over-the-shoulder shot

Looking over the shoulder of a person.



**Point of view shot
(POV)**

Seeing everything that a person sees themselves.



Close-up

such as showing details of a user interface a device the person is holding.

Liv Media

| Number | Cut | Type | Visual Content | Sound | Colour | Time | Actors | Drawn by |
|--------|-----|------|--|--|--------|-----------|-----------|----------|
| 1 | | | TITLE SEQUENCE | | | | | Olivia |
| 2 | | ELS | DAY: Car enters Rainthorpe, shot from horses field. | Actor on phone Sound of car driving along gravel down the drive. (Music) | | 8 seconds | Charlotte | Olivia |
| 3 | | CU | Hand taking Bag from car, meanwhile still on the phone | Girl on phone (Music) | | 1 second | Charlotte | Olivia |
| 4 | | CU | Car boot slams | Girl on phone (music) | | 1 second | Charlotte | Olivia |
| 5 | | ECU | Front door handle opens door | The clanking of the door handle opening, and girl on phone | | 1 second | Charlotte | Olivia |
| 6 | | LS | Door opens - actor enters - shot from inside | | | 2 seconds | Charlotte | Olivia |
| 7 | | CU | Actor on phone, jammed into shoulder | "see u soon" (phone conversation) | | 2 seconds | Charlotte | Olivia |

Next Steps:

- 1.) Refine Storyboard + Create Shot List (Filming)
(Submit via UniworX, Tuesday 11:59am)
- 2.) Plan Filming (Location, Permissions, Actors, Artefacts etc.)

Gather back here: 16h (s.t.)